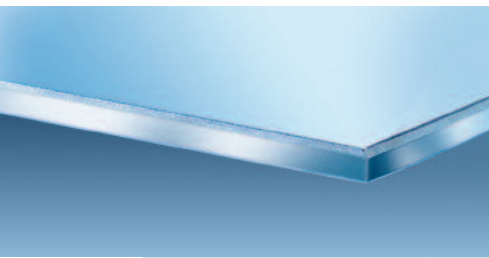
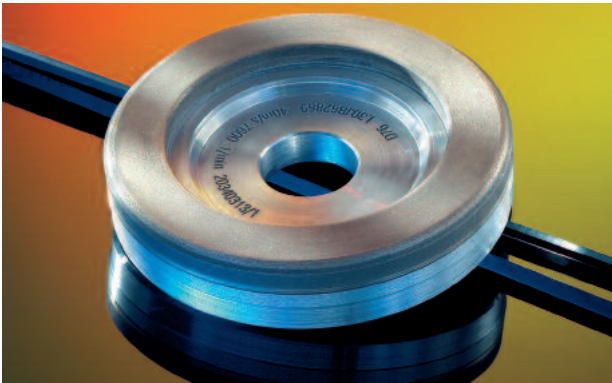


Automatic vertical arissing machine

Economical high quality arissing

- ◆ Automatic arissing of rectangles and shapes with straight edges
- ◆ Cup wheel technology for best arissing quality at low operating costs
- ◆ No contact of coated surface of low-E glass
- ◆ Minimal space requirement
- ◆ Ideal for medium and large production volumes
- ◆ Wide application in tempered glass, laminated glass, and insulating glass manufacturing





Economical and accurate

- ◆ Accurate cup wheel technology and wet arissing process for:
 - outstanding edge quality
 - improved yield
- ◆ Individual adaptation of the cup wheels to different edge geometries for optimal arissing results

Automatic and flexible

- ◆ Automatic arissing process
- ◆ Processing of different glass types, e.g. float and laminated glass
- ◆ No contact of coated surface of low-E glass
- ◆ Suitable for rectangles and shapes with up to eight straight edges

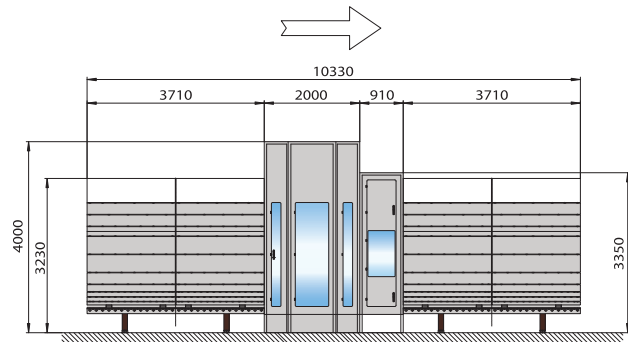
Intelligent and user-friendly

- ◆ Ease of use and minimal handling
- ◆ Self-controlling solution, no data input necessary

- ◆ Automatic recognition of the glass shape by an intelligent sensing system
- ◆ Different operating modes (seaming and pass-through)

Modular and versatile

- ◆ Compact design, minimal space requirement
- ◆ Integrated rinsing zone, preserves the water demineralizing of the washing machine
- ◆ Wide range of application:
 - stand-alone, e.g. in tempered glass manufacturing
 - integrated into an insulating glass production line



Option

- ◆ Separate water treatment for arissing and rinsing zones

Technical data	first'arris 27
Glass size max.	2700 x 3210 mm (106.3 x 126.4 in.)
Glass size min.	180 x 350 mm (7.1 x 13.8 in.)
Glass thickness	3 – 19 mm (0.12 – 0.75 in.)
Arris facet, adjustable	0,5 – 2 mm (0.02 – 0.08 in.)
Glass transport height vertical	500 ± 20 mm (19.7 ± 0.79 in.)